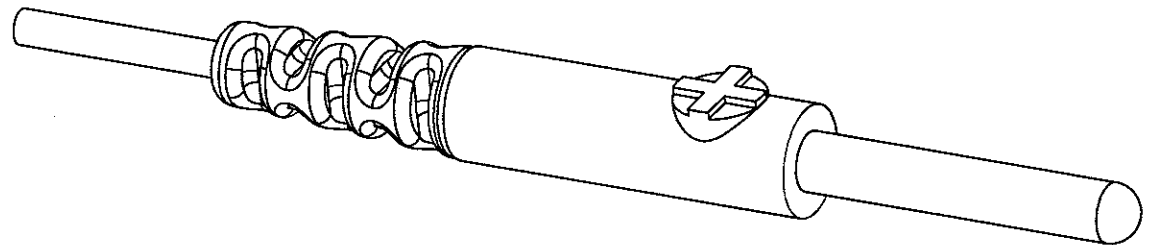
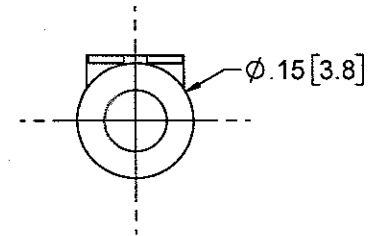


(ALSO AVAILABLE WITH NEGATIVE (-) SYMBOL)



| REV | DESCRIPTION                     | DATE    | BY  |
|-----|---------------------------------|---------|-----|
| B   | REV PER ECO 39730 MAB 1/12/23   | 1/23/23 | MAB |
|     | REDRAWN IN SOLIDWORKS XZ 1/4/21 | 1/19/21 | XZ  |
| A   | REL PER ECO 18606 WDS 8/23/12   | 9/5/12  | WDS |

REVISIONS

THIS DRAWING CONTAINS CONFIDENTIAL AND PROPRIETARY INFORMATION AND MAY NOT BE ISSUED OR REPRODUCED, IN WHOLE, OR IN PART, WITHOUT THE EXPRESS WRITTEN PERMISSION OF P1 TECHNOLOGIES.

**TOLERANCES**  
UNLESS OTHERWISE SPECIFIED  
ALL DIMENSIONS IN INCHES  
DIMENSIONS IN [ ] METRIC

**FRACTIONAL**  
 $\pm 1/64$

**DECIMAL**  
.00  $\pm .01$  [.25mm]  
.000  $\pm .005$  [.127mm]

**ANGULAR**  
 $\pm .5^\circ$

| APPROVALS                   | DATE    |
|-----------------------------|---------|
| DRAWN<br>WDS                | 8/23/12 |
| CHECKED<br><i>S. Pehoh</i>  | 1/12/23 |
| PROJ ENGR                   |         |
| APPROVED<br><i>S. Pehoh</i> | 1/12/23 |
| PROJECT                     | FSCM    |

**P Technologies**  
BECAUSE EVERYTHING CONNECTS  
6591 Merriman Road, Roanoke, VA 24018  
Phone: 540-772-7950 Fax: 540-989-7519

|                    |                |              |               |
|--------------------|----------------|--------------|---------------|
| TITLE<br>PLUG, 402 |                | SCALE<br>4:1 |               |
| SIZE<br>A          | DWG<br>2516-50 | REV<br>B     | SHT<br>1 OF 1 |