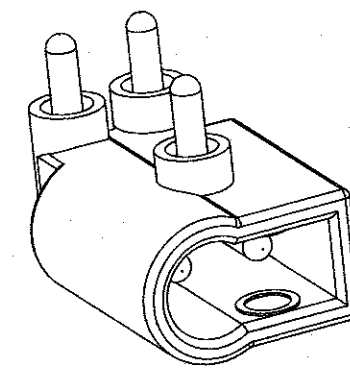
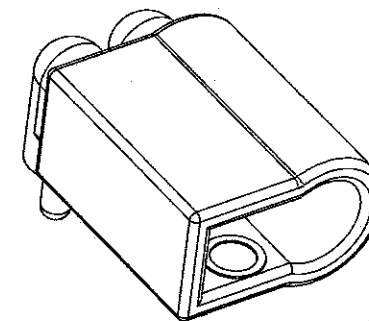
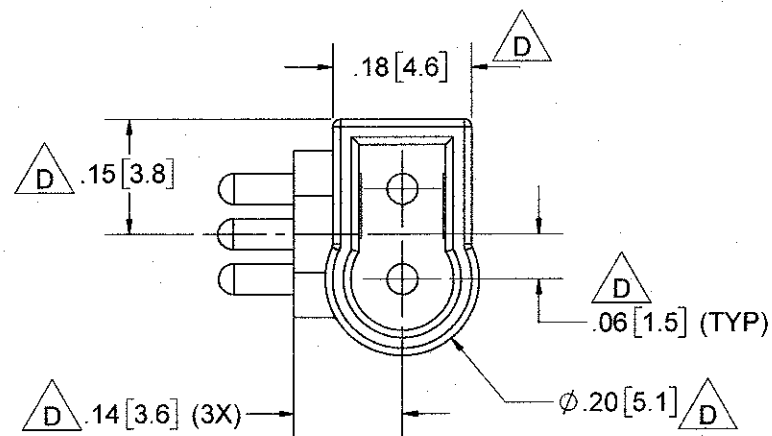


NOTES:

1. MATERIAL: PBT
OTHER MATERIALS AVAILABLE
2. SIGNAL CONTACT PLATING: SOFT NICKEL, THEN SOFT GOLD
3. PIN SETBACK: 0.10" [2.5MM]
EN 60601 TOUCHPROOF
4. GENERAL PERFORMANCE (CONTACT POI FOR TEST CONDITIONS)
EXTRACTION FORCE: 7.5 LBS AVERAGE (33.4N)
LIFE CYCLE: 1000+ INSERTION CYCLES
HIPOT: 1000 VAC BETWEEN CONTACTS
5000 VDC TO ANY EXPOSED METAL COMPONENTS
MAX CURRENT: 8 AMPS
5. OPERATING TEMPERATURE: +5° C TO +60° C
6. UL94 V-0/5V
7. WAVE SOLDERABLE



THIS DRAWING CONTAINS CONFIDENTIAL AND PROPRIETARY INFORMATION AND MAY NOT BE ISSUED OR REPRODUCED, IN WHOLE, OR IN PART, WITHOUT THE EXPRESS WRITTEN PERMISSION OF PLASTICS ONE INC.

REV	DESCRIPTION	DATE	BY
D	REV PER ECO 27895 TAS 10/6/16	10/18/16	SJA
C	REV PER ECO 19396 TAS 6/19/13 REDRAWN IN SOLIDWORKS	7/8/13	TVB
B	REV PER ECO 9220 JLS 12/05/05	12/15/05	JLS
A	RELEASE PER ECO 1680 NJS 2/15/96	2/21/96	NJS
REVISIONS			

TOLERANCES UNLESS OTHERWISE SPECIFIED ALL DIMENSIONS IN INCHES DIMENSIONS IN [] METRIC		APPROVALS	DATE
FRACTIONAL ±1/64	DRAWN N. SOCHOR	9/15/95	
DECIMAL .00 ±.01 [.25mm] .000 ±.005 [.127mm]	CHECKED LOS	10/10/16	
ANGULAR ±.5°	PROJ ENGR		
	APPROVED K. Espaly	10/14/16	
	PROJECT 6653	FSCM	

PlasticsOne

Medical, Research & Audio Components
6591 MERRIMAN ROAD, S.W., ROANOKE, VA, 24018
PHONE: 540-772-7950 FAX: 540-989-7519

TITLE JACK, PCB, ANGLED, HORIZONTAL,
1mm HIGH EXTRACTION

SCALE 4:1

SIZE DWG B 37341-50 REV D SHT 1 OF 1